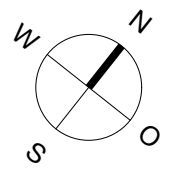
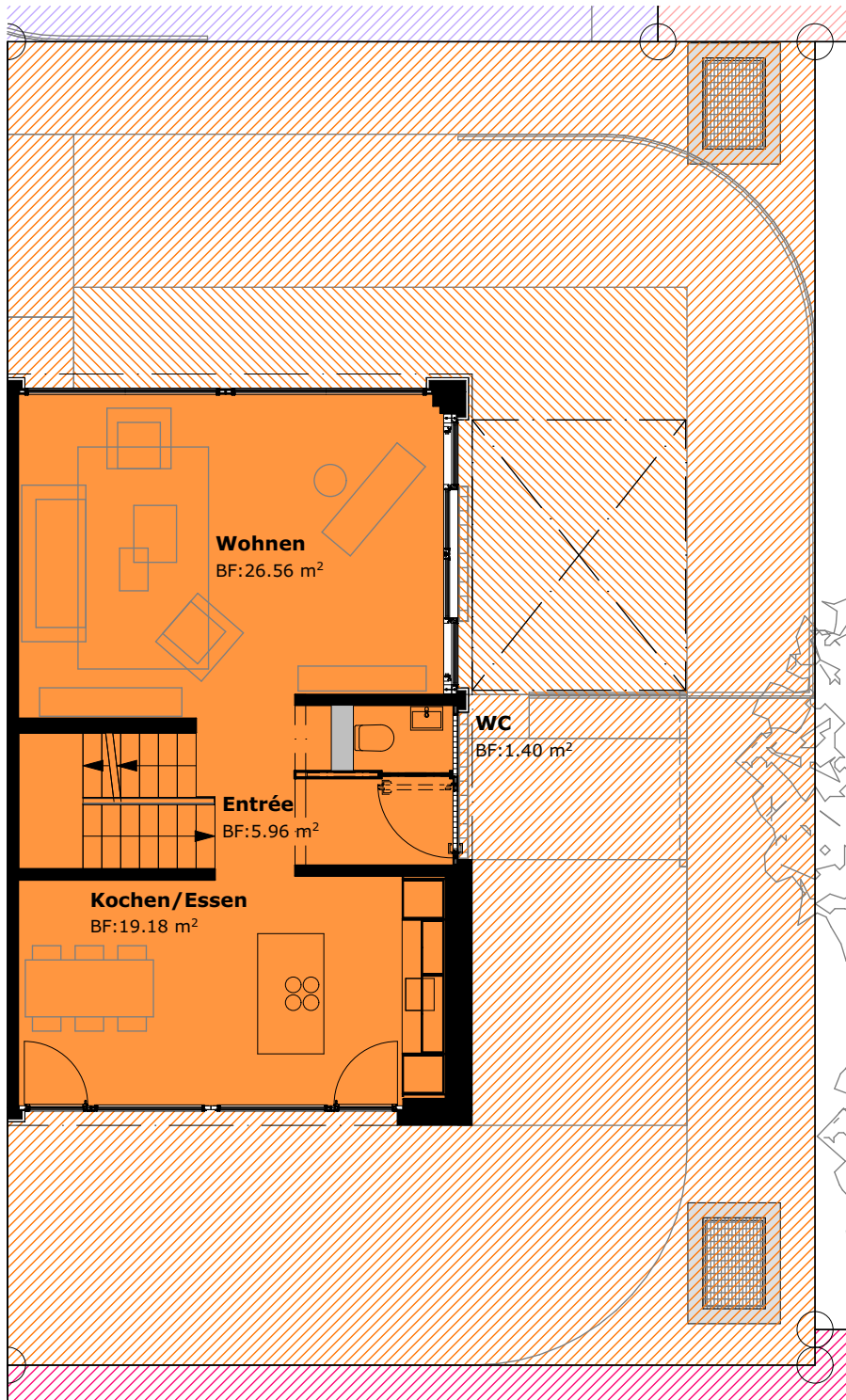


Kubatur = 617.43 m ³
NGF UG = 24.02 m ²
Sitzplatz = 25.93 m ²
Terrasse = 19.42 m ²



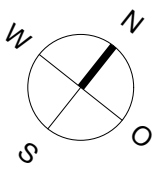
2 Parkplätze in Einstellhalle (Nr. 6+7)





Kubatur = 617.43 m ³
NGF EG = 58.17 m ²
Sitzplatz = 25.93 m ²
Terrasse = 19.42 m ²

2 Parkplätze in Einstellhalle (Nr. 6+7)

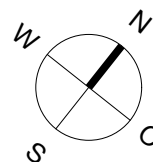


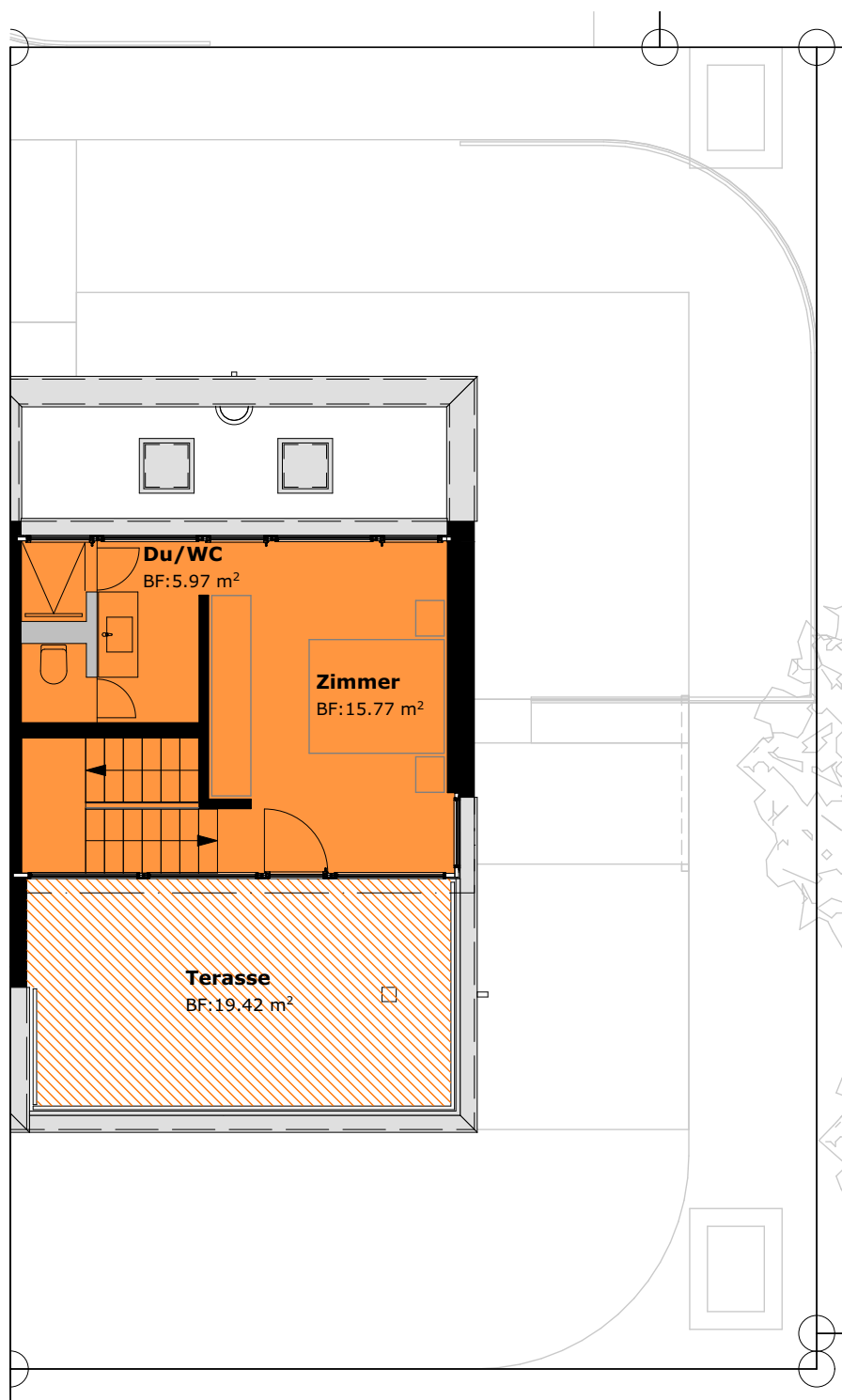


Kubatur = 617.43 m ³
NGF OG = 55.22 m ²
Sitzplatz = 25.93 m ²
Terrasse = 19.42 m ²



2 Parkplätze in Einstellhalle (Nr. 6+7)





Kubatur = 617.43 m ³
NGF AG = 26.78 m ²
Sitzplatz = 25.93 m ²
Terasse = 19.42 m ²



2 Parkplätze in Einstellhalle (Nr. 6+7)

