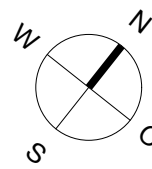
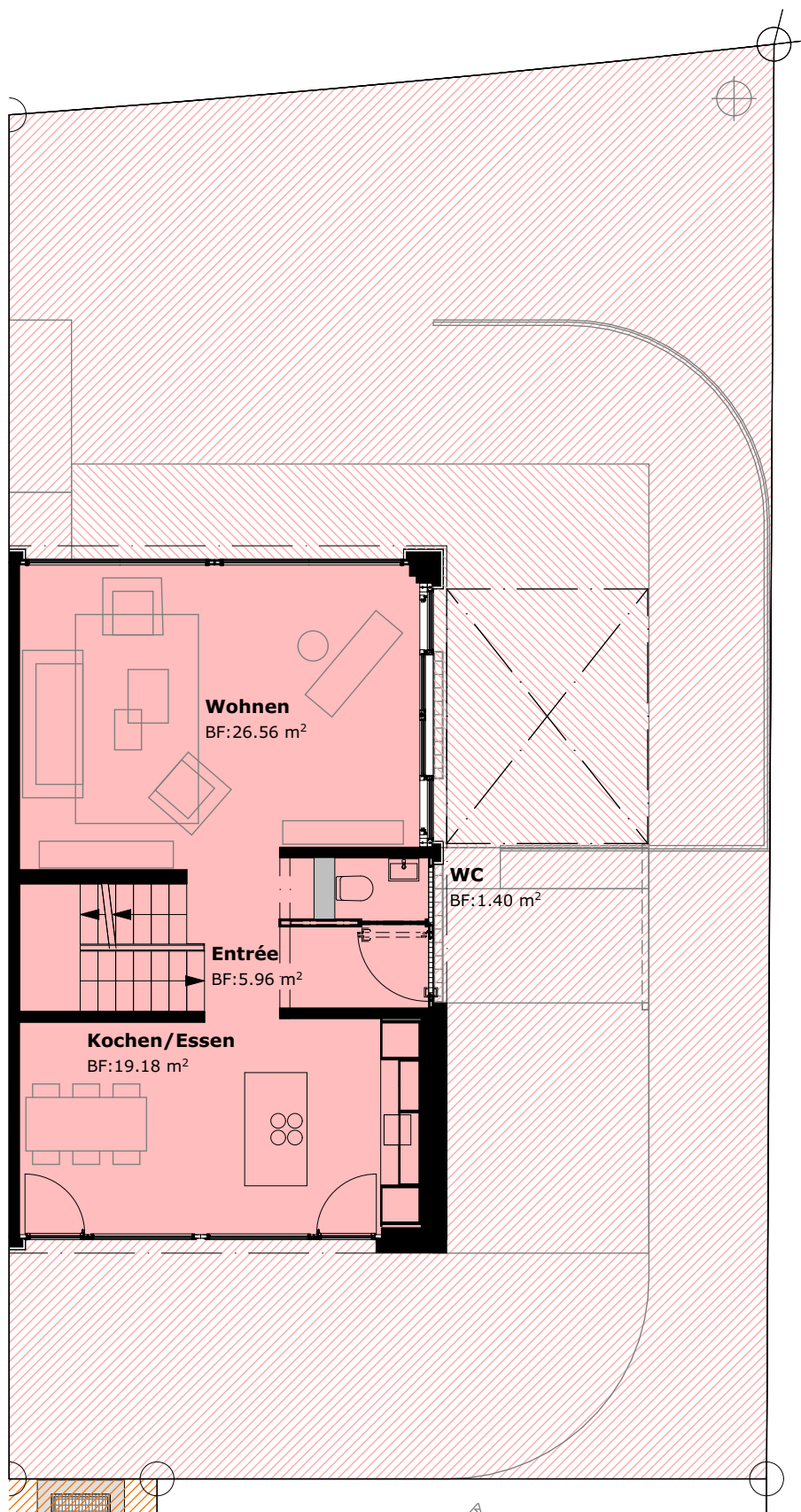


| |
|----------------------------------|
| Kubatur = 723.51 m ³ |
| NGF UG = 53.13 m ² |
| Sitzplatz = 25.93 m ² |
| Terrasse = 19.42 m ² |



2 Parkplätze in Einstellhalle (Nr. 17+18)

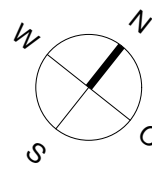


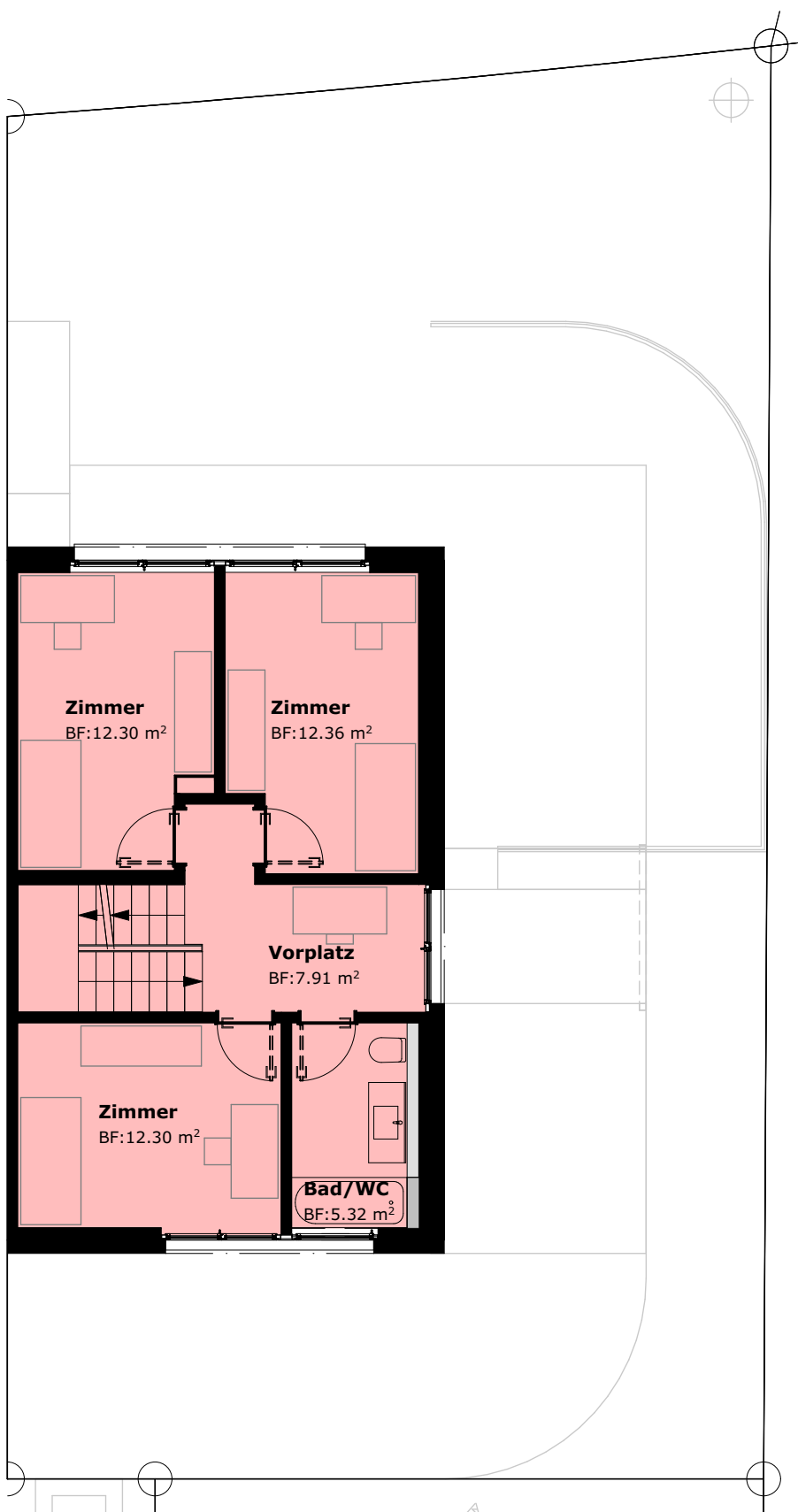


| |
|----------------------------------|
| Kubatur = 723.51 m ³ |
| NGF EG = 58.17 m ² |
| Sitzplatz = 25.93 m ² |
| Terrasse = 19.42 m ² |



2 Parkplätze in Einstellhalle (Nr. 17+18)

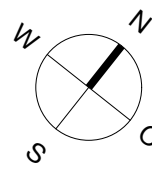


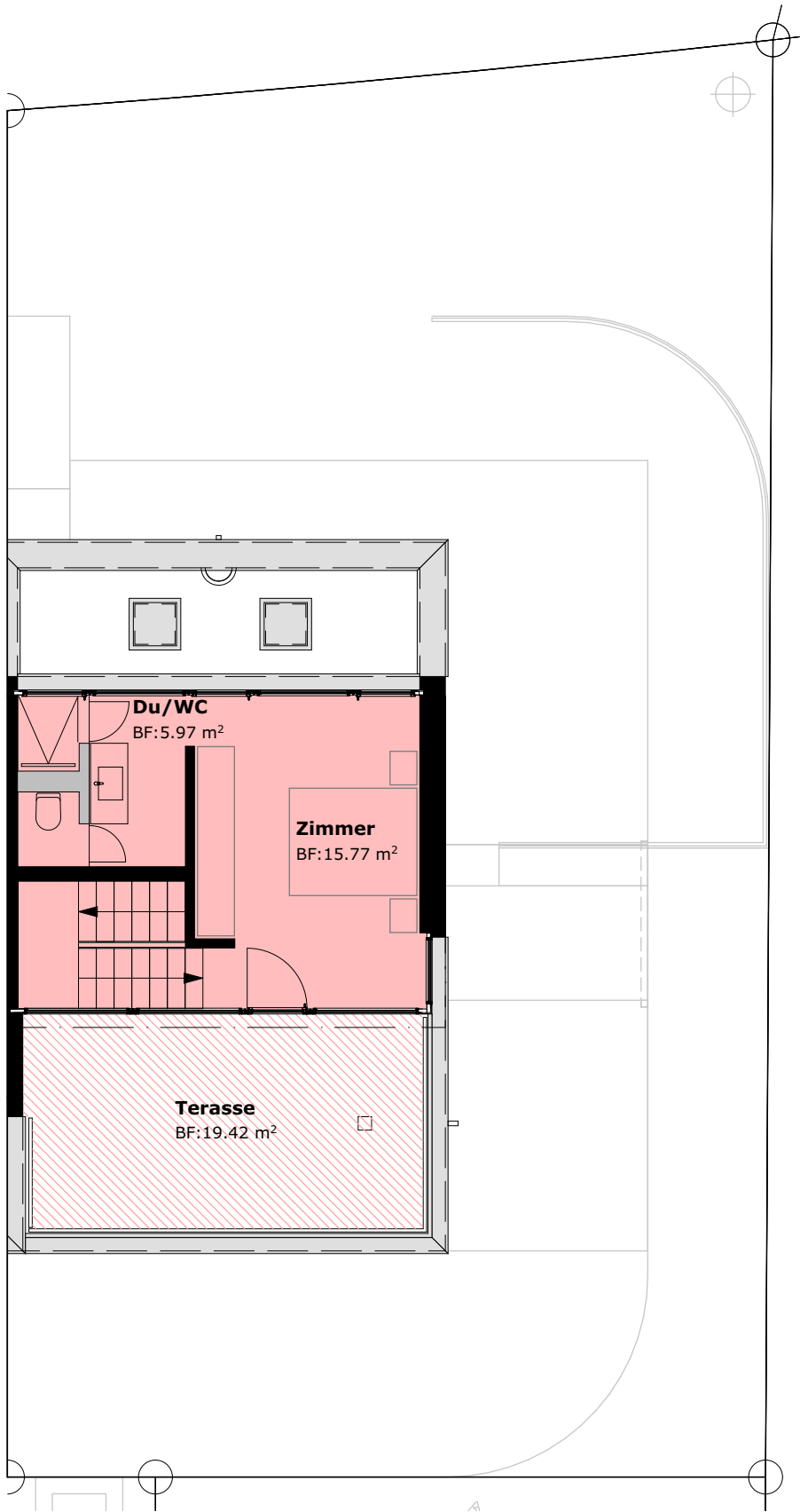


| |
|----------------------------------|
| Kubatur = 723.51 m ³ |
| NGF OG = 55.22 m ² |
| Sitzplatz = 25.93 m ² |
| Terrasse = 19.42 m ² |



2 Parkplätze in Einstellhalle (Nr. 17+18)





| |
|----------------------------------|
| Kubatur = 723.51 m ³ |
| NGF AG = 26.78 m ² |
| Sitzplatz = 25.93 m ² |
| Terasse = 19.42 m ² |

2 Parkplätze in Einstellhalle (Nr. 17+18)

